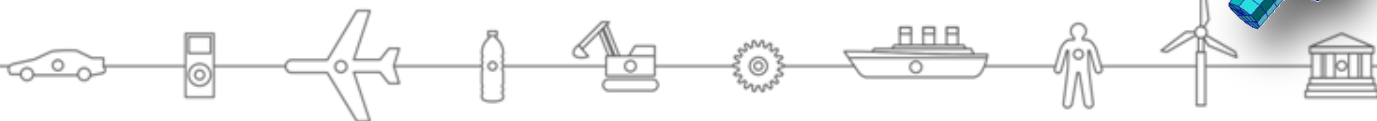
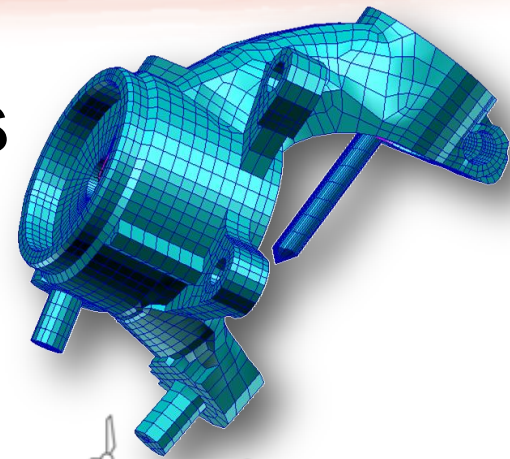


# 2011 Release Webinar Series

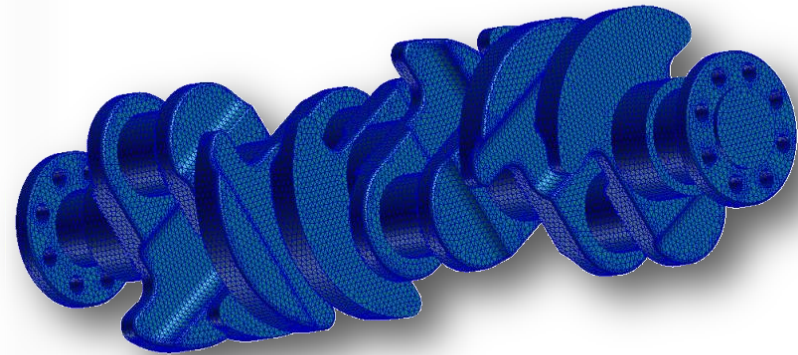
## Patran 2011 Release Highlights

Complete FEA Modeling Solution



# Patran 2011 Release Highlights

- Productivity Enhancements
  - Analysis Manager Enhancements
  - SuperModel Capabilities Into Core
- CAD Updates
- Solver Support
  - 3<sup>rd</sup> Party Results
  - Sinda Preference Enhancements
- MSC Fatigue Upgrades
  - Durability Icon Ribbon
  - DTLIB Based – Spot, Seam Weld and Duty Cycle



2  
x

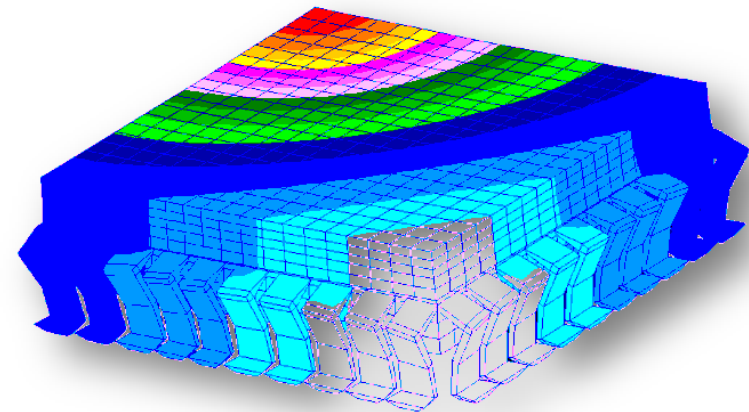
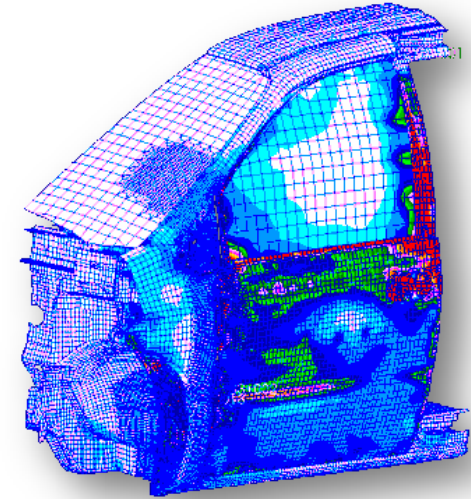
# Analysis Manager Enhancements

- Additional Analysis Manager
  - QueMgr Crash Recovery
  - Heavy Network Load Performance
  - Windows 7 Interactive Job Support
  - P3Mgr Staging Host File Mapping and Staging Host Submittal
- Benefits
  - Improved productivity
  - Higher flexibility



# 3<sup>rd</sup> Party Solver Support Update

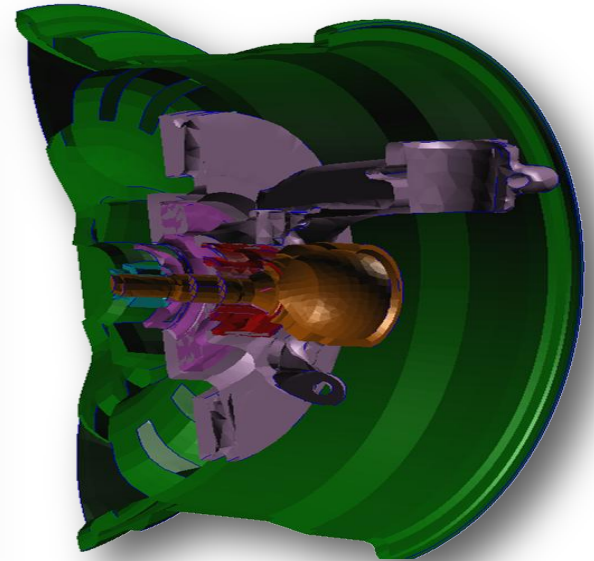
- Updated Direct Results Access
  - Abaqus Preference post-processing libraries to support Abaqus Version 6.10
  - Support ANSYS 12 and prior results
- Benefits
  - Take advantage of latest solver enhancements to results files



# CAD Interoperability

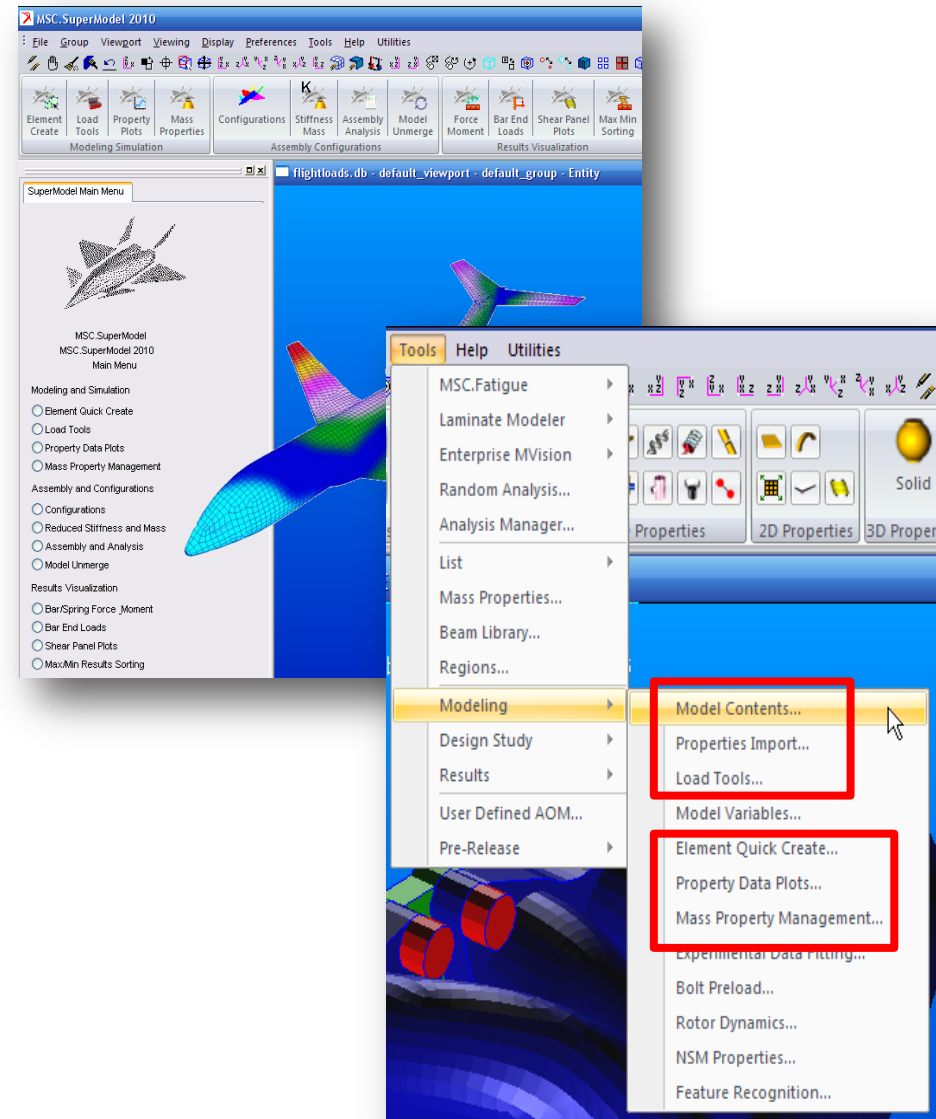


- Description
  - Update to the Spatial InterOp libraries to the R21 Version
- Benefits
  - Support for CATIA V5 R20
  - Support for Pro/E Wildfire 5



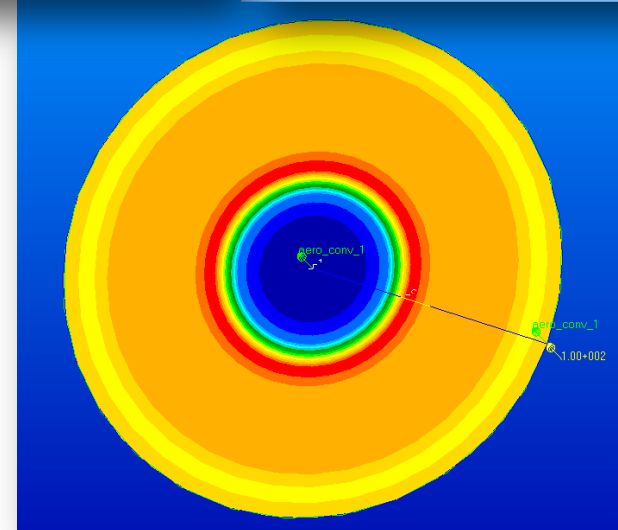
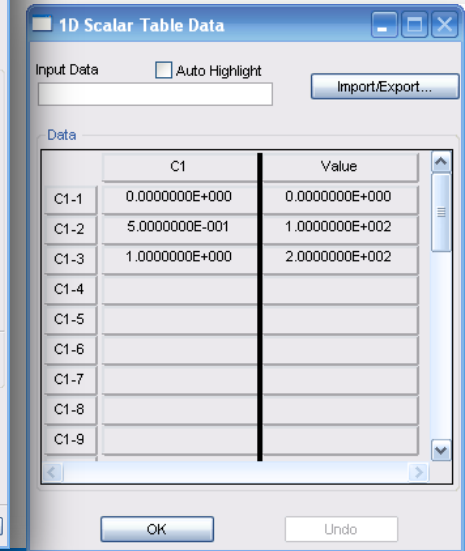
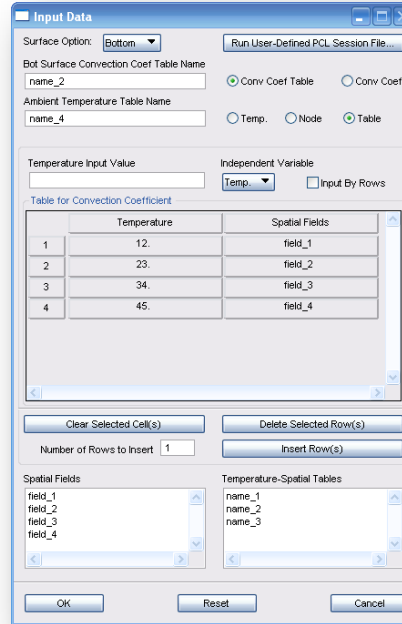
# Supermodel Integration

- New Supermodel productivity tools integrated into Patran
  - Modeling tools (Tools->Modeling)
    - Load Tools – Load Summation and Equivalent Vector
    - Property Data Plots
    - Mass Property Management
    - Model Contents
    - Element Quick Create
  - Results (Tools->Results)
    - Bar/Spring Force Moment
    - Bar End Loads
    - Max-Min Sorting
    - Shear Panel Plots
- Benefits
  - Single interface
  - Reduced training needs



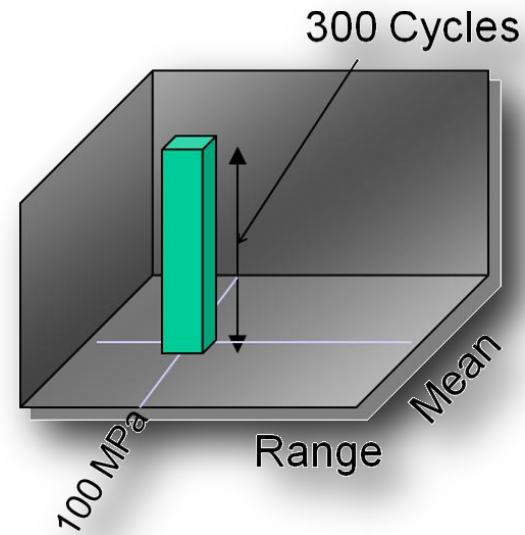
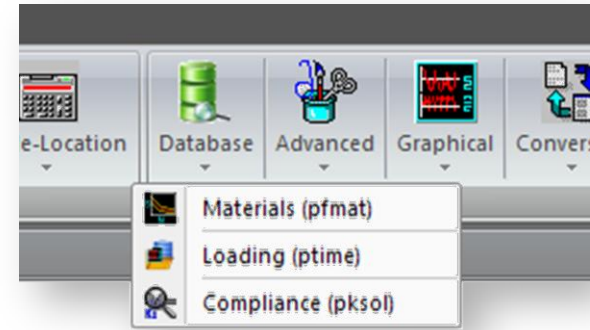
# Sinda Preference

- Aero heating-Aero flux and Aero Convection support
  - Spatial and time or temperature fields
    - PCL, Tabular, General, FEM
  - Multiple coordinate systems
    - Real, Parametric
- Support for user defined session file
  - Customized fields/tables
  - Process user text files
- Link to Thermica 4
- Benefits
  - Improved accuracy and modeling options

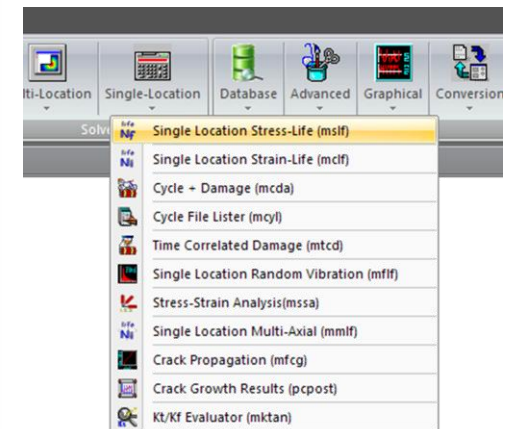
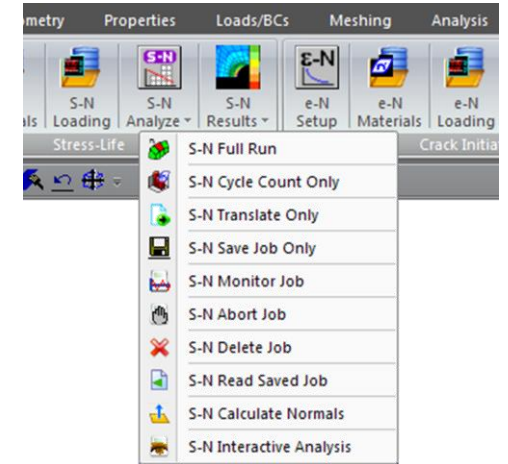
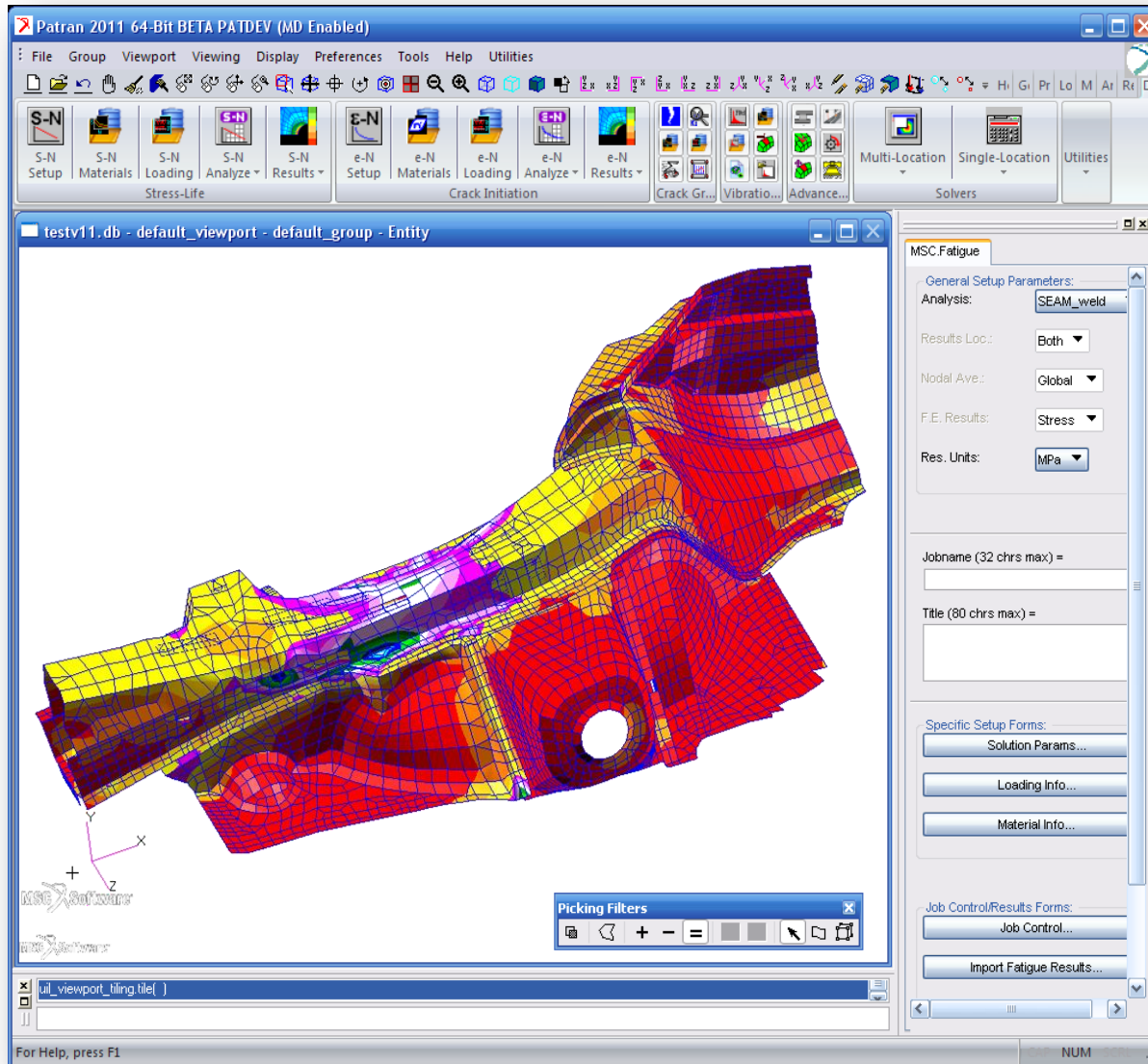


# MSC Fatigue Recent Developments

- MSC Fatigue 2010
  - First Production 64 bit Version
- MSC Fatigue 2010.2.3
  - Key Defect Corrections
- MSC Fatigue 2011
  - New nCode DTLib Functionality
  - Durability Icon Ribbon

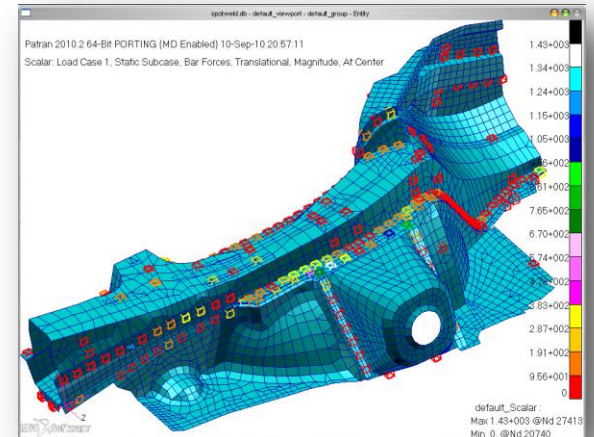
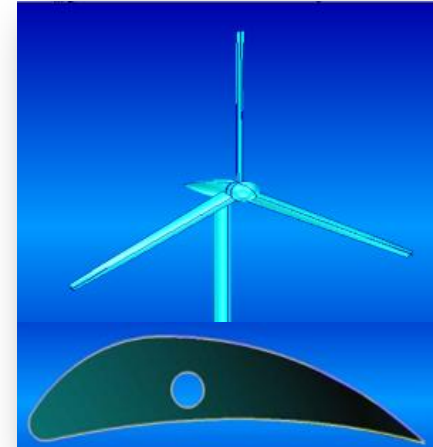


# New MSC Fatigue 2011 Durability Icon Ribbon



# Integration of nCode DTLib Library

- Spot-Weld
  - FKM Mean Stress Corrections
- Seam-Weld
  - Volvo Method (force)
  - Weld Root & Weld Throat Failure Predictions
- Seam-Weld
  - Interpolation between “stiff” and “flexible” S/N Curves
- Benefits
  - Improved accuracy
  - State of the art fatigue technology
  - Enhanced duty-cycle analysis



# Download Patran 2011 today!

- Solution Download Center: <http://mscsoftware.subscribenet.com/>

MSC Software Enterprise Simulation Solutions

Download Center Training & Support English 日本語 한국어 中文

**Software**  
Product List  
Product Search  
Order Media

**Administration**  
Account Members  
Change Password  
Email Preferences  
Product Preferences  
Download Preferences

**Information**  
Download Help  
FAQ  
User Manual  
Support  
Switch Account  
Logout

**Product Download**  
**Patran 2011 Beta**  
From this page you can download and obtain information about the specific product(s) below.

The software you are about to download is subject to export control laws and regulations. By downloading this software, you agree that you will not knowingly, without prior written authorization from the competent government authorities, export or reexport - directly or indirectly - any software downloaded from this website to any prohibited destination, end-user, or end-use.

**This software is provided for testing purposes only and is not permitted for production use in accordance with your software License Agreement.**

[Download Log](#) | [Notes](#) | [Notification Log](#) | [Restrict Access](#)

**Patran 2011 Beta Product Information Document**  
Download File Size: 77,904 bytes  
Estimated Times and Details  
[HTTPS Download](#)  
[Advanced Download Options](#)

**Patran 2011 Beta Release Guide**  
Download File Size: 1,393,831 bytes (1.3 MB)  
Estimated Times and Details  
[HTTPS Download](#)  
[Advanced Download Options](#)

# Thank You!

## Patran 2011 Release Highlights

Complete FEA Modeling Solution

